



Ethos
Biosciences

Exocell[®]
ELISAs,
Buffers &
Reagents

Nephrology & Associated
Metabolic Disorders

EthosBiosciences.com



Ethos Biosciences was founded in 2018 with acquisition of the Exocell® diagnostics arm of Glycadia, Inc. Ethos continues the design, development, and manufacture of diagnostic test kits and reagents for nephrology research, with an emphasis on metabolic disorders.

The Astral Diagnostics and American Bionostica businesses and brands joined Ethos Biosciences in 2021, bringing additional decades of experience in specialty biologic dyes/stains and lateral flow test development.

Astral Diagnostics

Astral Diagnostics has been a manufacturer of high-quality stains and reagents for laboratory, veterinary, and clinical research and diagnostics for more than 20 years.

American Bionostica

For more than two decades, American Bionostica has manufactured lateral flow tests and assays for OEM clients in food safety, environmental, veterinary medical, biodefense, and clinical sectors.

Exocell

For more than 35 years, Exocell has been a manufacturer of high-quality, easy-to-use diagnostic test kits and reagents for nephrology research.

info@ethosbiosciences.com | EthosBiosciences.com



The background is a solid teal color. On the left side, there are several horizontal white bars of varying lengths, some with rounded ends, creating a comb-like or staircase effect. A pipette is visible in the background, angled from the top right towards the bottom left, with its tip pointing towards the bottom right. The word "INDEX" is written in large, white, bold, sans-serif capital letters in the upper right quadrant.

INDEX

ELISAs

Nephrology
Oxidative Stress
Diluents & Buffers

Antibodies

Hemoglobin Products

ELISAs

Ethos Biosciences' Nephrology and Oxidative Stress ELISAs measure proteins and biomarkers that are of significance for kidney disease and other metabolic disorders. They are suitable for use with a range of sample types, including urine, plasma, serum, and cell culture supernatants. Kits feature a 96-well plate format, intended for up to 40 unique samples per plate (in addition to duplicates and controls).

The Creatinine Companion (Cat. 1012) is commonly used in conjunction with albumin ELISAs for additional intra- and inter-assay standardization.

Nephrology

Many conditions affect kidney function, including primary kidney disease, systemic metabolic conditions, and lifestyle factors. Several biomarkers are useful for identifying and monitoring renal dysfunction and related conditions.

ALBUMIN

Kidneys affected by disease leak small to moderate amounts of protein into urine, a condition called microalbuminuria. Measuring urine albumin levels provides insight into the severity of kidney dysfunction.

CREATININE

Levels of creatinine, a protein normally present in urine, provide robust normalization to account for variations in urine concentration due to hydration status and time of day. Many measurements of urine analytes are presented as a ratio to creatinine.

NGAL

Neutrophil gelatinase-associated lipocalin (NGAL) is released from neutrophils and kidney tubular cells during inflammation and under stress.

CYSTATIN C

Cystatin C is a small protein that is produced by cells and filtered by the glomerulus. It is reabsorbed by tubular epithelial cells and catabolized, so it does not return to the bloodstream—making it an excellent marker for glomerular filtration rate (GFR).

NEPHRIN

Required for normal kidney development, nephrin expression is downregulated in glomerular diseases such as diabetic nephropathy, though urinary nephrin levels are increased. Measurement of nephrin in urine is a marker of podocyte dysfunction that may reflect the integrity of the kidney's filtration barrier.

ELISA Kits: Nephrology Assays

CAT #	ASSAY	TARGET / SPECIES	ASSAY PRINCIPLE	SPECIMEN	ASSAY RANGE	# PLATES
1004	Albuwell™ Hu	Albumin [Human]	direct competitive	urine [Hu]	0.156 - 10 µg/mL	2 x 96-well plates
1011	Albuwell™ M	Albumin [Mouse]	direct competitive	urine [Mouse]	0.156 - 10 µg/mL	2 x 96-well plates
NR002	Nephrat™ II	Albumin [Rat]	direct competitive	urine [Rat]	0.156 - 10 µg/mL	2 x 96-well plates
1012	Creatinine Companion	Creatinine [Human, Mouse, Rat]	Jaffe reaction	urine [all species]	10 - 100 µg/mL	2 x 96-well plates
1035	Human Nephrin	Nephrin [Human]	indirect competitive	urine [Hu]	0.031 - 2.0 µg/mL	1 x 96 well plate
1036	Rat Nephrin	Nephrin [Rat]	indirect competitive	urine [Rat]	0.031 - 2.0 µg/mL	1 x 96 well plate
1037	Mouse Nephrin	Nephrin [Mouse]	indirect competitive	urine [Mouse]	0.031 - 2.0 µg/mL	1 x 96 well plate
1041	Cystatin C, Human	Cystatin C [Human]	direct competitive	urine, serum, saliva, cell culture supernatant	7.8 - 500 ng/mL	1 x 96 well plate
1042	Cystatin C, Rat	Cystatin C [Rat]	direct competitive	urine, serum, saliva, cell culture supernatant	7.8 - 500 ng/mL	1 x 96 well plate
1043	Cystatin C, Mouse	Cystatin C [Mouse]	direct competitive	urine, serum, saliva, cell culture supernatant	7.8 - 500 ng/mL	1 x 96 well plate
1038	Human NGAL	NGAL [Human]	direct Ab sandwich	urine, serum, cell culture [Human]	0.2 - 12.5 ng/mL	1 x 96 well plate
1039	Rat NGAL	NGAL [Rat]	direct Ab sandwich	urine, serum, cell culture [Rat]	0.313 - 30 ng/mL	1 x 96 well plate
1040	Mouse NGAL	NGAL [Mouse]	indirect competitive	urine, serum, cell culture [Mouse]	12.5 - 200 ng/mL	1 x 96 well plate

Oxidative Stress

Oxidative stress occurs when a cell is unable to eliminate the damaging reactive oxygen species that arise as a normal consequence of mitochondrial function. It plays a key role in the pathogenesis of chronic conditions such as diabetes, cancer, and cardiovascular and neurodegenerative diseases. Organs with high mitochondrial activity such as the kidneys are particularly vulnerable to this metabolic imbalance.

DNTB (ELLMAN'S) THIOL OXIDATIVE STRESS ASSAY

DTNB (5-5'-dithiobis [2-nitrobenzoic acid]) reacts with the disulfide bond in a sample to produce 2-nitro-5-thiobenzoic acid. Under conditions of oxidative stress, free thiols decrease and disulfides increase. Determination of the free thiol concentration in biological samples reflects the ability to detoxify lipid (and other) peroxides.

TBARS MALONDIALDEHYDE OXIDATIVE STRESS ASSAY

Lipid peroxidation may impact biological membranes by altering structure, permeability and function, and is implicated in a number of disease states. Metabolic breakdown of the altered lipids results in the formation of "secondary messengers" including malondialdehyde (MDA), 4-hydroxynonenal and others. Measurement of MDA allows an assessment of oxidative stress.

The TBARS Malondialdehyde Oxidative Stress Assay relies upon the reaction of thiobarbituric acid and MDA under acidic conditions to form a colored (and fluorescent) adduct. Our kit is designed to allow ready assessment of TBARS MDA equivalents in biological samples using fluorometric or spectrophotometric methods.

ELISA Kits: Oxidative Stress Assays

CAT #	ASSAY	TARGET / SPECIES	ASSAY PRINCIPLE	SPECIMEN	ASSAY RANGE	# PLATES
1021	DTNB-Thiols	Sulfhydryl groups [all species]	Chemical reaction; absorbance	serum, urine [all species]	15.6 - 1000 μ mol	1 x 96 well plate
1020	Malondialdehyde / Universal TBARS	TBA-reactive substances in biologic samples [all species]	Chemical reaction, absorbance or fluorescence	universal	0 - 30 nmole fluorometric; 0 - 300 nmole spectrophotometry	1 x 96 well plate

Diluents & Buffers

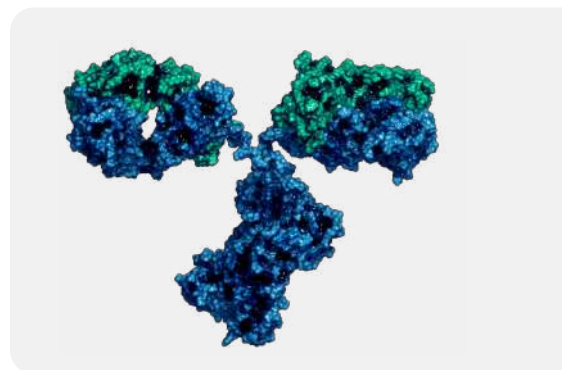
Our prepared diluents and wash buffers offer convenience for ELISA workflows. The Ethos Dilurex brand include specially formulated versions compatible with our ELISA kits, yet provide options for optimizing your ELISA.

Ethos Dilurex™ ELISA Buffers & Diluents

CAT #	PRODUCT	DESCRIPTION	UNIT SIZE
4Z0004	Dilurex 10X PBS Buffer (pH 7.4)	Phosphate buffered saline (PBS) stock solution to use as a wash buffer	100 mL, 1 L
4Z1004	Dilurex 1X PBS Buffer (pH 7.4)	Ready-to-use formulation	100 mL, 1 L
4Z0032	Dilurex 1 M Tris-HCl Buffer (pH 7.5)	Stock solution for making different buffers	100 mL, 1 L
4Z0008	Dilurex EIA Diluent (pH 7.5)	Diluent specifically formulated to stabilize samples in Ethos' Nephryn ELISA kits	100 mL, 1 L
1Z0216	NHE-BSA Diluent	Diluent formulated for ELISA kit samples that require extended dilutions	100 mL, 1 L
4Z0217	Dilurex HepCas+ Buffer (pH 7.5)	HEPES and casein ELISA buffer with EDTA	100 mL, 1 L
4Z0023	Dilurex PBS Casein Sucrose Blocking (pH 7.4)	Blocking buffer formulated for ELISAs	100 mL, 1 L
4Z2010	Dilurex 10X Imidazole Wash Buffer (pH 7.2)	Imidazole stock solution with Tween® 20	100 mL, 1 L
4Z1010	Dilurex 1X Imidazole Wash Buffer (pH 7.2)	Ready-to-use formulation	100 mL, 1 L
4Z2005	Dilurex 10X TEA Wash Buffer (pH 6.8)	Triethanolamine ELISA wash buffer stock solution with Tween® 20	100 mL, 1 L
4Z2006	Dilurex 1X TEA Wash Buffer (pH 6.8)	Ready-to-use formulation	100 mL, 1 L
4Z0013	Dilurex Low Acid Color Stopper	ELISA color stopping solution	100 mL, 1 L

Antibodies

Ethos Biosciences' portfolio includes antibodies supporting investigations into renal dysfunction and related metabolic disorders. Antibody targets include albumin, glycosylated albumin, and glycosylated hemoglobin A1c.



Antibodies

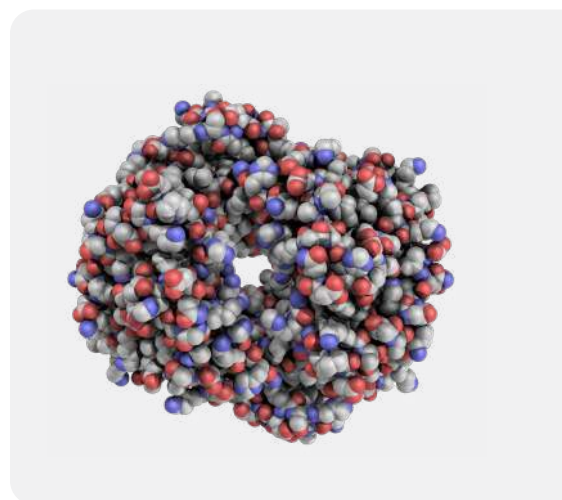
CAT #	ANTIBODY	TYPE	PURIFICATION METHOD	AMOUNT / FORM	IMMUNOGEN	HOST SPECIES	TARGET SPECIES
A717	Mouse Anti-Human Glycosylated Albumin	monoclonal [A717], IgG1	purified from ascites (protein A column)	0.1 mg in 0.1 mL PBS, sterile-filtered preservative-free	native human glycosylated albumin from purified human plasma albumin	mouse	human
E85A	Mouse Anti-Human Glycosylated Hemoglobin A1c	monoclonal [E85A]	affinity purified from ascites (protein A column)	0.1 mg in 0.1 mL PBS, sterile-filtered, preservative-free	glycosylated hemoglobin	mouse	human
cAlbAb	Chicken Anti-Albumin Polyclonal, affinity-purified	polyclonal, IgY	affinity purified (albumin column)	0.1 mg in PBS pH 7.2 + NaN ₃ , sterile-filtered	albumin	chicken	mouse, human, rat
rAlbAb-AP	Rabbit Anti-Mouse Albumin, affinity purified	polyclonal, IgG	affinity purified (mouse albumin column)	0.1 mg in PBS pH 7.2 + NaN ₃ , sterile-filtered	mouse albumin	rabbit	mouse
rAlbAb-FP	Rabbit Anti-Mouse Albumin, fractionation purified	polyclonal, IgG	fractionation purified	0.1 mg in PBS pH 7.2 + NaN ₃ , sterile-filtered	mouse albumin	rabbit	mouse

Hemoglobin Products

Our hemoglobin products serve as biologic quality controls for analyzer and assay development and laboratory-based QC controls (e.g. linearity controls). They have additionally been utilized as immunogens for antibody development.

Hemoglobin Products

CAT #	PRODUCT	Amount
HbA0	Human Hemoglobin A0 (HbA0)	5.0 mg
HbA2	Human Hemoglobin A1a, A1b mixture	1.0 mg
HbA1	Human Hemoglobin A1c	1.0 mg
gly HbA0	Glycosylated Human Hemoglobin A0 (HbA0)	1.0 mg
de HbA0	Deglycosylated Human Hemoglobin A0 (HbA0)	5.0 mg



Hemoglobin Assay

CAT #	ASSAY	TARGET / SPECIES	ASSAY PRINCIPLE	SPECIMEN	ASSAY RANGE	# PLATES
1044	Drabkin's Microplate Hemoglobin Assay	Hemoglobin [all species]	Chemical reaction, absorbance	Blood samples, column fractions, etc.	0.5 - 20 mg/mL	1 x 96-well plate



Ethos Biosciences

Logan Township, NJ 08085

info@ethosbiosciences.com

EthosBiosciences.com



INTERNATIONAL SALES & DISTRIBUTION

Polysciences Europe GmbH

Hirschberg an der Bergstrasse, Germany
info@polysciences.de

Polysciences Asia-Pacific

Taipei, Taiwan
info@polysciences.tw

Ott Scientific India

Gurugram, Haryana, India
info@ottscientific.in

Ott Scientific Brasil

Indaiatuba - SP, Brasil
info@ottscientific.com.br

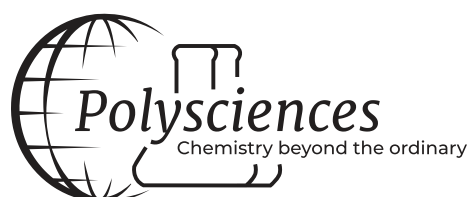


Ott Scientific

CATALYZING INNOVATION

The Ott Scientific family of companies strives to develop innovative chemistries, products, and services that support advancements across scientific disciplines. Together, we are dedicated to delivering the highly specialized products and services that support scientific discovery and innovations in diagnostics, medical device, specialty chemicals, and technology.

We are proud to serve customers across the globe who are working to advance what's possible.



EB.BR.EXOCELL.r07172024

Albuwell™, Dilurex™, Exocell®, and Nephtrat™ are trademarks of Ethos Biosciences, Inc.

©Ethos Biosciences 2022-2024