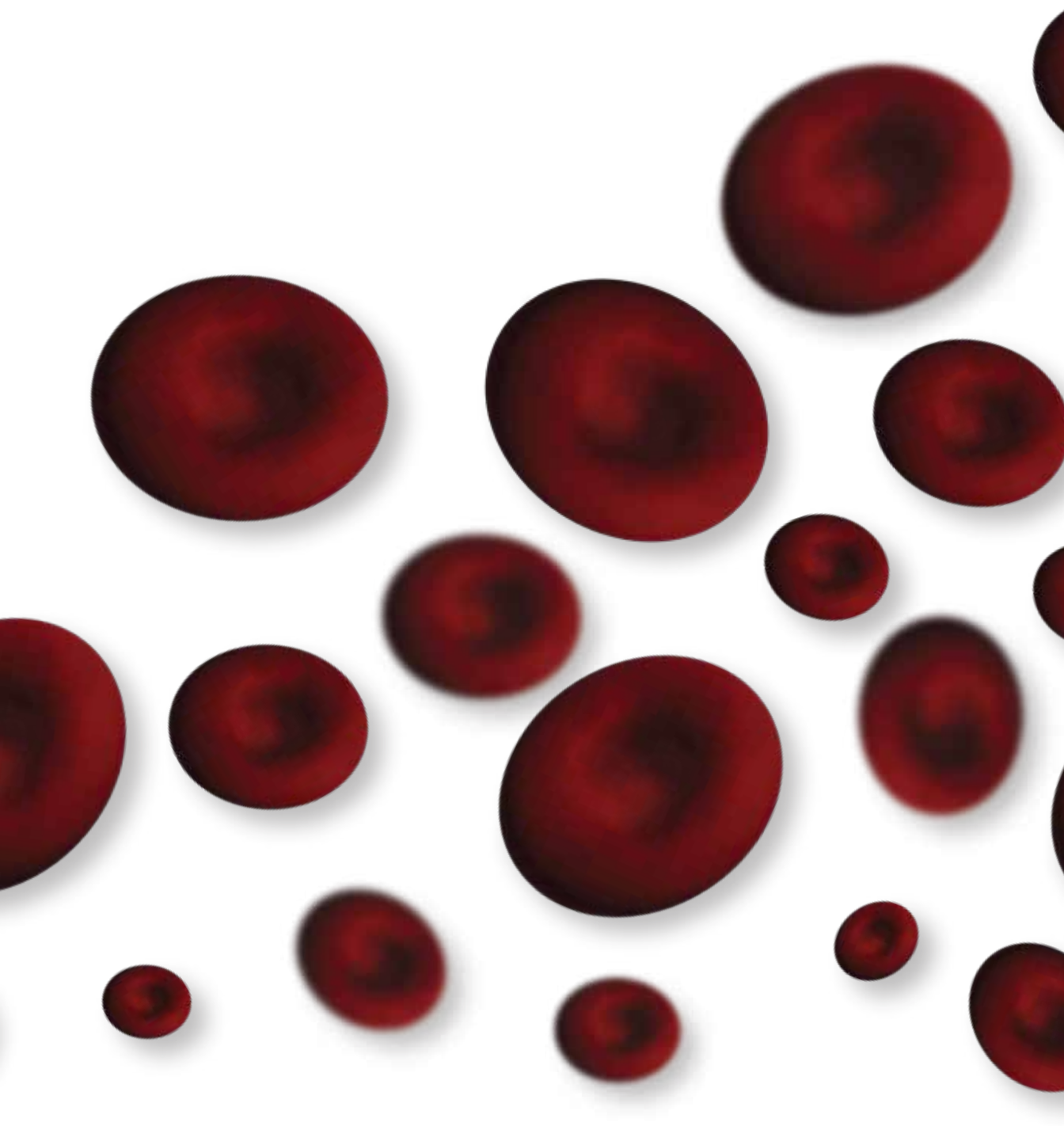




Ethos Biosciences

HEMATOLOGY CATALOG



LOCATIONS

North America

Ethos Biosciences, Inc.
2070 Center Square Road
Logan Township, NJ 08085
800.441.0366
info@ethosbiosciences.com

Bangs Laboratories, Inc.
Fishers, IN
info@bangslabs.com

Polysciences, Inc.
Warrington, PA
info@polysciences.com

Brazil

Ott Scientific Brasil
Indaiatuba - SP
Brasil
info@ottscientific.com.br

Europe

Polysciences Europe GmbH
Hirschberg an der Bergstrasse
Germany
info@polysciences.de

Asia-Pacific

Polysciences Asia-Pacific, Inc.
Taipei, Taiwan
info@polysciences.tw

India

Ott Scientific India Pvt. Ltd.
Gurugram, Haryana
India
info@ottscientific.in

Founded through the acquisition of the Excell[®] diagnostics arm of Glycadia, Ethos Biosciences was established to continue the design, development and manufacture of high-quality, easy-to-use diagnostic test kits and reagents. In 2021, we expanded our mission and footprint by bringing legacy American Bionostica (LFA CDMO) and Astral Diagnostics (laboratory dyes and stains) businesses under the Ethos Biosciences umbrella.

Together with Bangs Laboratories and Polysciences, Ethos Biosciences is part of the Ott Scientific family of companies.



Ott Scientific
CATALYZING INNOVATION

HEMATOLOGY

Ethos Biosciences' brand **Astral Diagnostics™** hematology portfolio features a broad line of stains and reagents for use with both automated and manual staining protocols. Classical Wright's stain offerings are supplemented by single- and three-step staining protocols that result in rapid differentials. Traditional offerings are available in Wright's and Wright-Giemsa formulations. The use of certified dyes along with strict adherence to quality assurance procedures provides the foundation for products that reward the user with excellent morphological examination.

DYES & STAINS

Eosinophil Stain

Used to detect nasal eosinophil count. Stain helps to differentiate allergies from super imposed infections.

Eosinophil Stain
5555-16 (16 oz)

Approved for in-vitro diagnostic use [IVD].

Giesma Stain Azure B

Giemsa stain is a classical blood film stain for peripheral blood smears and bone marrow specimens. It is used to visualize chromosomes, stain fungus histoplasma and identify mast cells. A Romanowsky stain.

Giesma Stain Azure B
5545 (16 oz, 1 Gallon)

This product may have a hazardous shipping charge.
Approved for in-vitro diagnostic use [IVD].

Natt-Herricks Solution

Natt-Herricks Solution is a traditional avian blood counting solution.

Natt-Herricks Solution
5593 (16 oz)

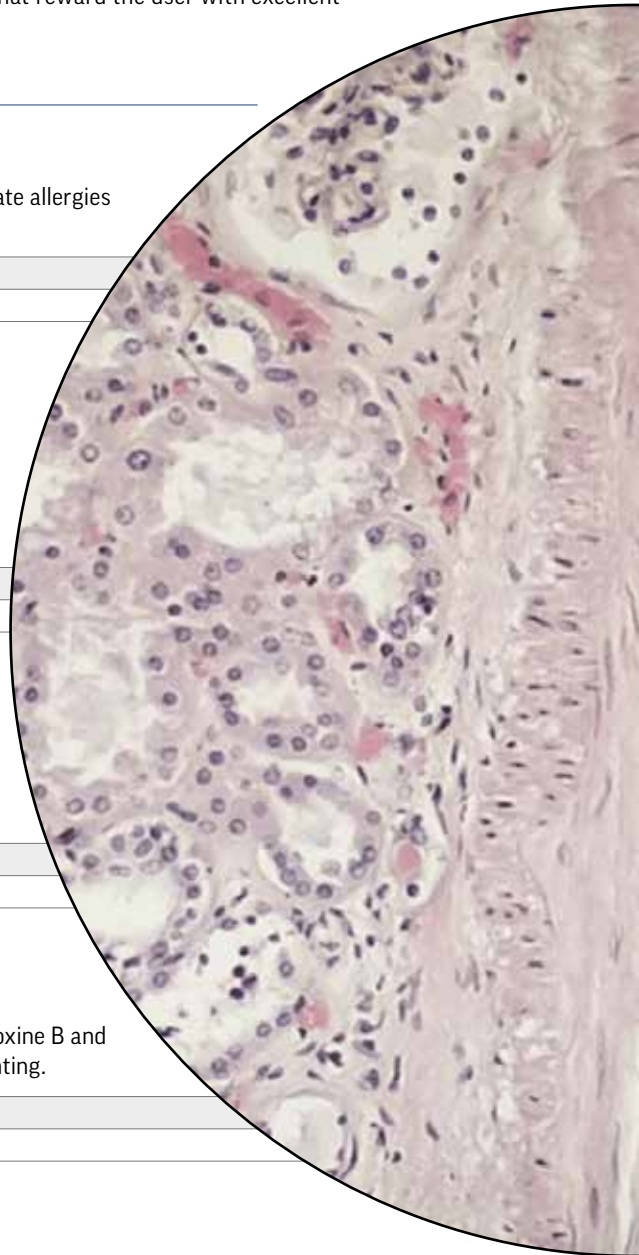
Approved for in-vitro diagnostic use [IVD].

Phloxine 1.0% for Avian White Blood Cell

Phloxine 1.0% for Avian White Blood Cell solution contains phloxine B and polypropylene glycol; used to differentiate avian WBC for counting.

Phloxine 1.0%
5360-32 (32 oz)

Approved for in-vitro diagnostic use [IVD].



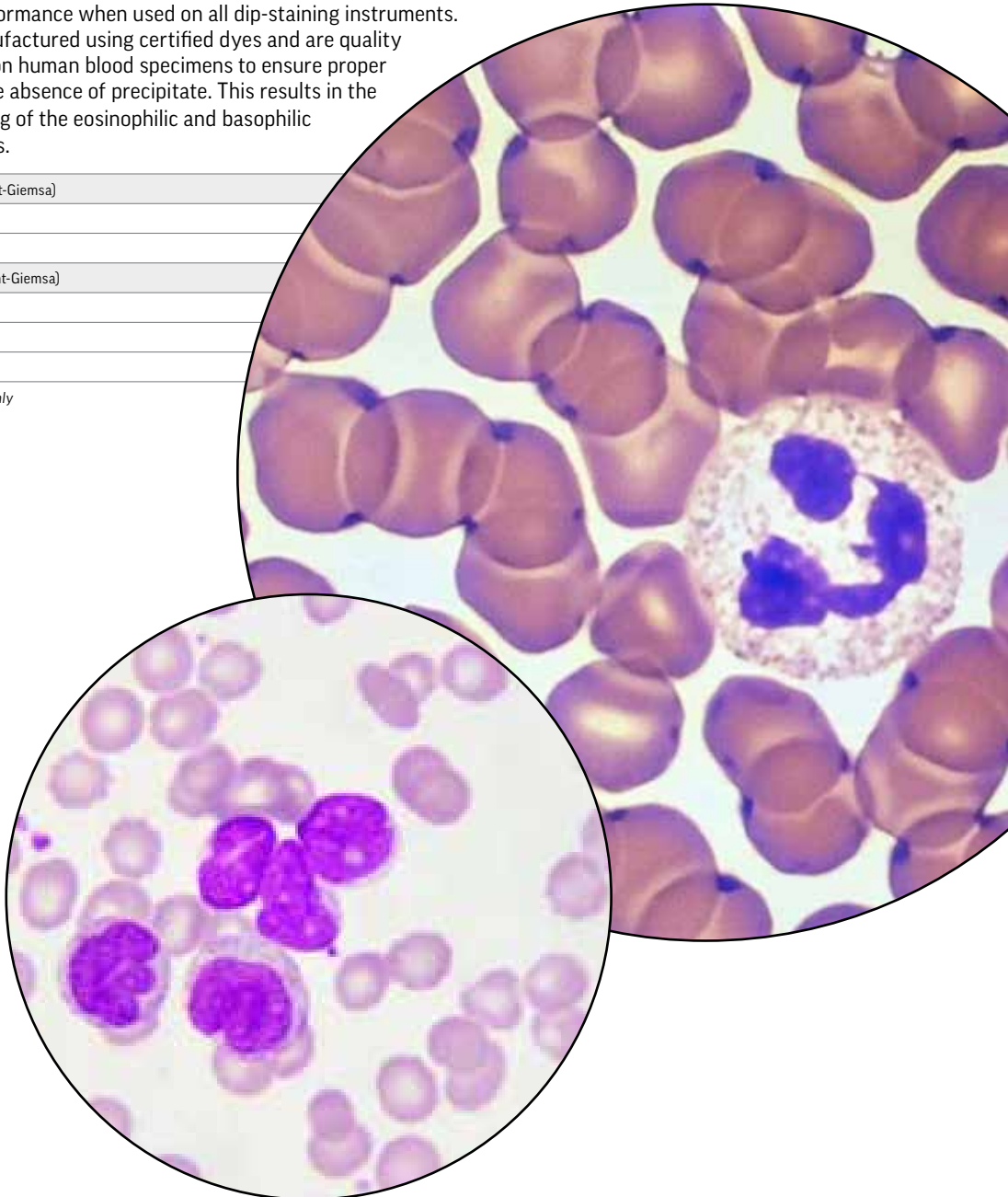
Quick I™ Red and Quick I™ Blue, (Wright-Giemsa)

Ethos Biosciences/Astral Diagnostics has developed and optimized single staining solutions with broad applicability in the staining of differential blood smears. A buffered adaptation of the traditional Romanowsky formulation, Quick I™ Red yields stained slides that provide results similar to Wright's stain. Quick I™ Blue provides more basophilic results traditionally associated with Wright-Giemsa stains.

Additionally, Quick I™ Red and Quick I™ Blue have been formulated to provide consistent performance when used on all dip-staining instruments. Stains are manufactured using certified dyes and are quality control tested on human blood specimens to ensure proper staining and the absence of precipitate. This results in the superior staining of the eosinophilic and basophilic cell components.

Quick I™ Red, (Wright-Giemsa)
5131R-16 (16 oz)
5131R-32 (32 oz)
Quick I™ Blue, (Wright-Giemsa)
5232B-16 (16 oz)
5232B-32 (32 oz)
5232B-G (1 gal)

For Professional Use Only



Quick III™ Set

QUICK III is a rapid hematology staining system utilizing three prepared solutions. The essential eosin and thiazine staining solutions are manufactured using certified dyes and are QC tested on human blood smears. The convenient 15-second slide dip procedure results in stained smears comparable to Wright-Giemsa protocols. Staining times may be altered to vary the eosinophilic or basophilic staining as desired.

Additionally, QUICK III has been formulated to provide superior results when used as an andrology stain. Users will be pleased with the differentiation of immature sperm and white blood cells and the excellent resolution achieved in the staining of the head, neck and tail piece. The variety of packaging configurations will suit the needs of even the largest laboratory performing manual differentials.

Quick III™ Set
5316 (3 x 16oz kit)

For Professional Use Only. Approved for in-vitro diagnostic use [IVD].

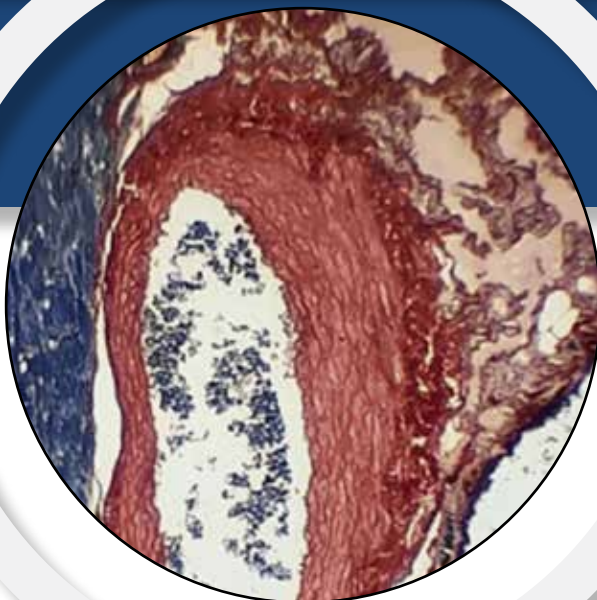
Quick III™ Fixative, Quick III™ Solution I, and Quick III™ Solution II

Quick III™ Fixative, Quick III™ Solution I, and Quick III™ Solution II are part of our rapid hematology staining system utilizing three prepared solutions. The essential eosin and thiazine staining solutions are manufactured using certified dyes and QC tested on human blood smears. The convenient 15 second slide dip procedure results in stained smears comparable to Wright-Giemsa protocols. Staining times may be altered to vary the eosinophilic or basophilic staining as desired. The variety of packaging configurations will suit the needs of even the largest laboratory performing manual differentials.

Additionally, QUICK III™ has been formulated to provide superior results when used as an Andrology stain. Users will be pleased with the differentiation of immature sperm and white blood cells and the excellent resolution achieved in the staining of the head, neck and tail piece.

Quick III™ Fixative
5317-16 (16 oz)
5328-G (1 gal)
Quick III™ Solution I
5318-16 (16 oz)
5329-G (1 gal)
Quick III™ Solution II
5330-16 (16 oz)
5330-G (1 gal)

For Professional Use Only. Approved for in-vitro diagnostic use [IVD].



Quick III™ Stat-Pak

Quick III™ Stat-Pak is a rapid hematology staining system utilizing three prepared solutions. The essential eosin and thiazine staining solutions are manufactured using certified dyes and are QC tested on human blood smears. The convenient 15 second slide dip procedure results in stained smears comparable to Wright-Giemsa protocols. Staining times may be altered to vary the eosinophilic or basophilic staining as desired. The variety of packaging configurations will suit the needs of even the largest laboratory performing manual differentials.

Additionally, Quick III™ has been formulated to provide superior results when used as an Andrology stain. Users will be pleased with the differentiation of immature sperm and white blood cells and the excellent resolution achieved in the staining of the head, neck and tail piece.

Quick III™ Stat-Pak

5303 (3 x 4 oz)

For Professional Use Only. Approved for in-vitro diagnostic use [IVD].

Wright's Stain

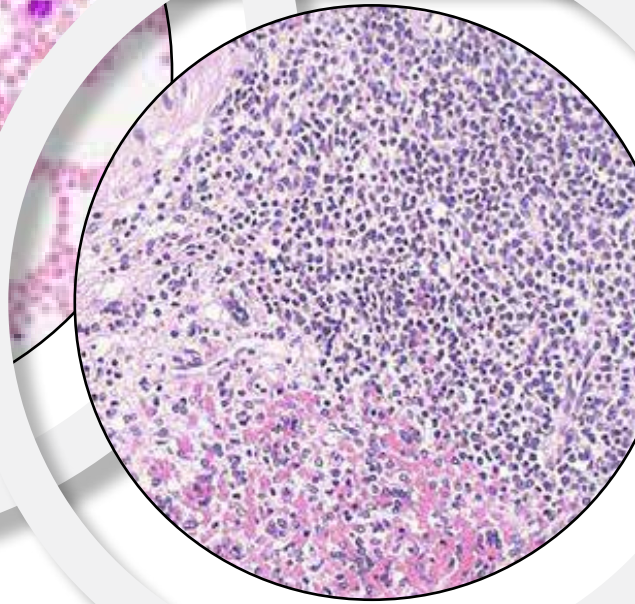
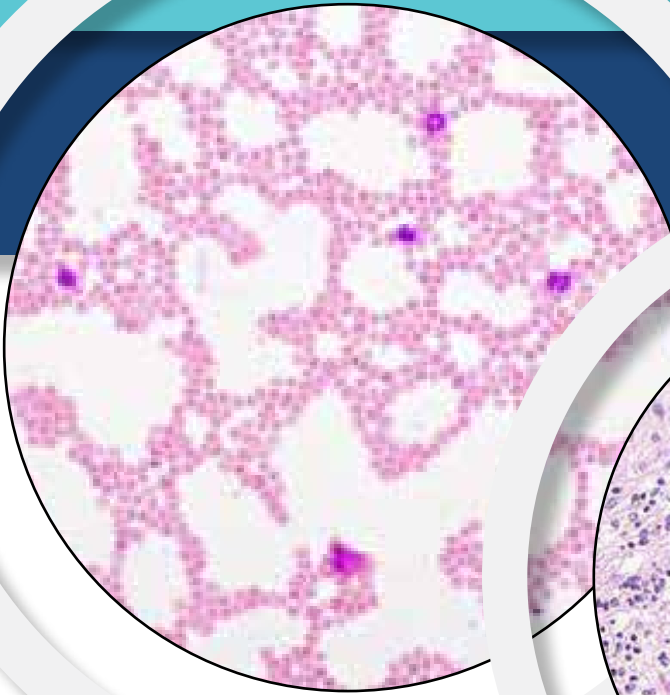
Wright's Stain is a polychromatic hematologic stain for differentiation of blood cell types. Ongoing quality control procedures assure the user of consistent, precipitate-free performance. The availability of both pH 6.8 and 7.2 buffers permits variation of stain intensity.

Wright's Stain

5580-16 (16 oz)

5580-G (1 gal)

This product may have a hazardous shipping charge. For Professional Use Only. Approved for in-vitro diagnostic use [IVD].



Wright-Giemsa Stain

Wright-Giemsa stain is a polychromatic hematologic stain for differentiation of blood cell types and histopathological detection of malarial parasites. Our formulation and QC support consistent, precipitate free performance. The availability of both pH 6.8 and 7.2 buffers, permits variation of stain intensity.

Wright-Giemsa Stain
5584-16 (16 oz)
5584-G (1 gal)

This product may have a hazardous shipping charge. For Professional Use Only. Approved for in-vitro diagnostic use [IVD].

Hematology Stain Pack, Wright's

Offered in Wright's or Wright-Giemsa formulations, users will find the traditional packs equal or exceed other brands on the Hema-Tek® Slide Stainer. Regardless of the selected offering, each pack contains stain (220 mL), buffer (540 mL) and rinse solutions (1000 mL) that are quality controlled in our analytical laboratory. Performance testing on human specimens guarantees lot-to-lot consistency.

Hematology Stain Pack, Wright's
1000 (5 packs)

This product may have a hazardous shipping charge.

Hematology Stain Pack, Wright-Giemsa

Offered in Wright's or Wright-Giemsa formulations, users will find the traditional packs equal or exceed other brands on the Hema-Tek® Slide Stainer. Regardless of the selected offering, each pack contains stain (220 mL), buffer (540 mL) and rinse solutions (1000 mL) that are quality controlled in our analytical laboratory. Performance testing on human specimens guarantees lot-to-lot consistency.

Hematology Stain Pack, Wright-Giemsa

1001 (5 packs)

Approved for in-vitro diagnostic use [IVD].

BUFFERS

Hematology Buffer, pH 6.8

Hematology buffer is used to dilute staining solutions in the Wright, Wright-Giemsa and Giemsa staining processes. Enhances bright-orange stained erythrocytes and differentiates white blood cells.

Hematology Buffer, pH 6.8

5548-G (1 gal)

5548-5G (5 gal)

Approved for in-vitro diagnostic use [IVD].

Hematology Buffer, pH 7.0

Hematology buffer is used to dilute staining solutions in the Wright, Wright-Giemsa and Giemsa staining processes. Enhances bright-orange stained erythrocytes and differentiates white blood cells.

Hematology Buffer, pH 7.0

5575 (1 gal)

Approved for in-vitro diagnostic use [IVD].

Hematology Buffer, pH 7.2

Hematology buffer is used to dilute staining solutions in the Wright, Wright-Giemsa and Giemsa staining processes. Enhances bright-orange stained erythrocytes and differentiates white blood cells.

Hematology Buffer, pH 7.2

5573-G (1 gal)

5573-5G (5 gal)

Approved for in-vitro diagnostic use [IVD].

Hematology Rinse, pH 7.0

The Hematology rinse is used for the rinsing steps required in the Wright, Wright-Giemsa and Giemsa staining process.

Hematology Rinse, pH 7.0

5571-G (1 gal)

Approved for in-vitro diagnostic use [IVD].

MICROSCOPY SUPPLIES

Immersion Oil, Low Viscosity

Oil immersion medium available in low viscosity is used when an increased magnification of 100x is necessary.

Immersion Oil, Low Viscosity
5510-15 (0.5 oz)
5510-02 (2 oz)
5510-16 (16 oz)

Immersion Oil, High Viscosity

Oil immersion medium available in high viscosity is used when an increased magnification of 100x is necessary.

Immersion Oil, High Viscosity
5511-15 (0.5 oz)
5511-02 (2 oz)
5511-16 (16 oz)

Slide Holder (5 slide capacity)

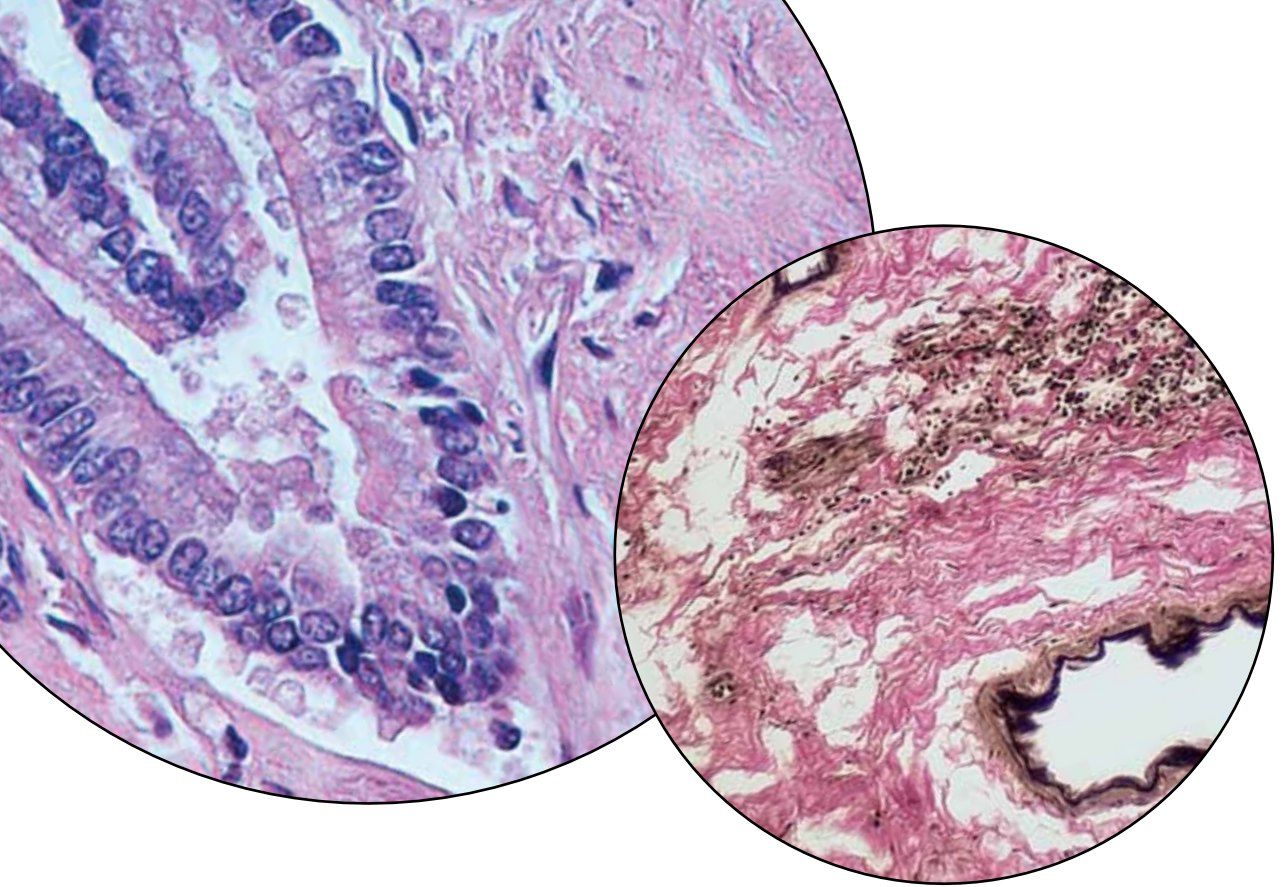
Our slide holder is designed specifically for “stat” procedures for laboratories using manual staining procedures, NeatStain is available as a rapid three-step differential Hematology stain, a Gram stain, and a Trichrome stain. The convenient holder permits the processing of two to five slides at one time for improved efficiency.

Neat Stain, Slide Holder
9-NSH-5

For Professional Use Only.

Trademarks:

Ethos Biosciences™
Astral Diagnostics™
Hema-Tek®
Quick I™, Quick III™



GENERAL REAGENTS

Deionized Water

Deionized water is the recommended water for most research needs and clinical procedures.

Deionized Water
3315-G (1 gal)
3315-5G (5 gal)

Methanol

Methanol is a fixative used for cytology and hematology specimen.

Methanol
3326-16 (16 oz)
3326-G (1 gal)

This product may have a hazardous shipping charge.

About Us

Ethos Biosciences manufactures the Astral Diagnostics brand of diagnostic stains and laboratory reagents. For more than 20 years, our products have been used in academic, clinical and veterinary medical laboratories. We work with retail, bulk, private label and OEM customers, and our Custom & Contract services span formulation, packaging/kitting and fulfillment.

Our Commitment to Service

We are uniquely positioned to offer highest-level technical support and troubleshooting assistance. We have a deep understanding of dye and stain formulations and ensure each new batch has the highest quality. Ethos' Astral Diagnostics products are supported by fully-equipped, on-site laboratories that are staffed with analytical chemists and accredited Medical Laboratory Scientists and Histologists. We understand the laboratory ecosystem, and are able to provide truly authentic support to our customers. We're happy to assist with product selection or protocol review, and will take our troubleshooting to the bench if a deeper investigation is required.

Our Commitment to Quality

At Ethos Biosciences, quality extends far beyond basic dye formulation and concentration checks. Our fully-integrated program ensures control from start to finish—it begins with raw materials, and encompasses dye and reagent formulation, manufacturing and quality control. Product QC is comprehensive, with performance testing that features actual specimens to ensure that dyes meet expected intensity and cellular component differentiation criteria. For Ethos, Quality isn't simply a claim—it's the cornerstone of our philosophy and our commitment to you.

Our Commitment to Customers

At the end of the day, we do all of these things for one purpose: to serve our valued customers. We invite you to contact us with any questions, or to browse the Resources section of the website for protocols and other support documents. Our application experts are also available to assist with technical questions. Contact us at info@ethosbiosciences.com or 800-441-0366.

Testing solutions in support of a healthy world!

Ethos Biosciences' facility is a registered **Food and Drug Administration Establishment**, and our **Quality Management System** has been certified to comply with **ISO 13485:2016**.





Ethos Biosciences

2070 Center Square Road
Logan Township, NJ 08085
800.441.0366
info@ethosbiosciences.com

Stay Connected - Follow Us!



Visit Our Website

