

Nanoparticle Reagents for Lateral Flow Assays

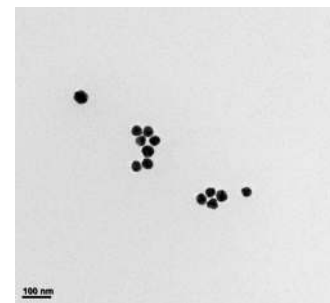
Ethos Biosciences is a manufacturer of colloidal gold, buffers/reagents, and ELISAs & LFAs for retail, bulk, private label and OEM customers. We work in partnership with Bangs Laboratories, a leading manufacturer of polymer, silica and magnetic microspheres.

With more than 20 years of CDMO lateral flow and ELISA services, we continue to expand our capabilities and capacity for this critical portion of the medical device and diagnostics supply chain.

COLLOIDAL GOLD

DESCRIPTION

Ethos' 40nm colloidal gold is a high quality suspension of gold nanoparticles in preservative-free DI water. We manufacture colloidal gold at large scale in a controlled fashion under our ISO 13485:2016 quality management system. Our 40nm colloidal gold offers superior performance in lateral flow assays.



CHARACTERISTICS

Nominal Diameter: 40nm
 Diameter Spec: 37 - 43nm
 Optical Density A520nm: OD1, OD5 (~0.01%, 0.05% solids)

ETHOS BIOSCIENCES ORDERING INFORMATION

Cat. #	Description
GOLD40-OD1	40nm Gold Colloid OD1
GOLD40-OD5	40nm Gold Colloid OD5

EUROPIUM CHELATE FOR TIME-RESOLVED FLUORESCENCE

DESCRIPTION

Bangs Labs' highly-fluorescent europium(III) nanoparticles offer exceptional functionality and stability for the development of diagnostic reagents. They have been utilized to develop highly sensitive assays in lateral flow and microplate formats, and are compatible with commercial europium chelate TRF readers. They are supplied in aqueous suspension at 1% solids (10mg/mL).



BANGS LABS ORDERING INFORMATION

Cat. #	Description
FCEU001	0.10µm Europium Chelate COOH
FCEU002	0.20µm Europium Chelate COOH
FCEU003	0.30µm Europium Chelate COOH
FCEU004	0.40µm Europium Chelate COOH
21960	Europium Chelate COOH Sampler Pack 1mL of 0.10µm, 0.20µm, 0.30µm, 0.40µm

Lateral Flow Assay Development & Manufacturing

The Ott Scientific family of companies presents our collaborative Ethos Biosciences + Bangs Laboratories lateral flow CDMO. In addition to expertise in microparticle formulation and synthesis, reagent development and contract LFA manufacturing, both companies bring decades of real-world experience in test and assay development to the endeavor. This new venture is a realization of our vision to strategically bridge cross-operational competencies to offer both unrivaled access and an exceptional service to the scientific and diagnostics communities.

Our highly-specialized lateral flow manufacturing operations are located within the 126,000 square foot Ethos Biosciences facility in NJ, which houses reel-to-reel dispensing and drying, sensor-based test strip cutting, reel-to-reel lamination and robotic cassette assembly and pouch filling/sealing equipment. The production line is supported by a customization Dry Room, state-of-the art dehumidification system, and QC laboratory.

AUTOMATION BY THE NUMBERS

2 DRYING TOWERS WITH SENSORS IN 6 ZONES
PRINT UP TO 7 LINES / STRIP
DISPENSE UP TO 670 STRIPS / MINUTE
PRODUCE 20 - 30 CASSETTES / MINUTE
FILL AND SEAL UP TO 40 POUCHES / MINUTE

ETHOS BIOSCIENCES

Building upon strong Exocell (ELISA) and American Bionostia (Lateral Flow CMO) histories, Ethos Biosciences has continued its robust investment in personnel and manufacturing and analytical capacity:

- State-of-the-art 126,000 ft² facility in NJ biotech corridor
- Automated manufacturing
- Customized Dry Room and dehumidification system

BANGS LABORATORIES

For more than three decades, Bangs Labs has manufactured highly-specialized microsphere-based reagents and analytical instrument calibrators for the medical device and diagnostics industry, research and clinical laboratories, and other life sciences sectors.

- Polymer microsphere formulation & synthesis
- Surface chemistry optimization & post-synthesis modification
- Fine particle analytical method development & validation
- Fluorescent & colorimetric labels and analytical methods

