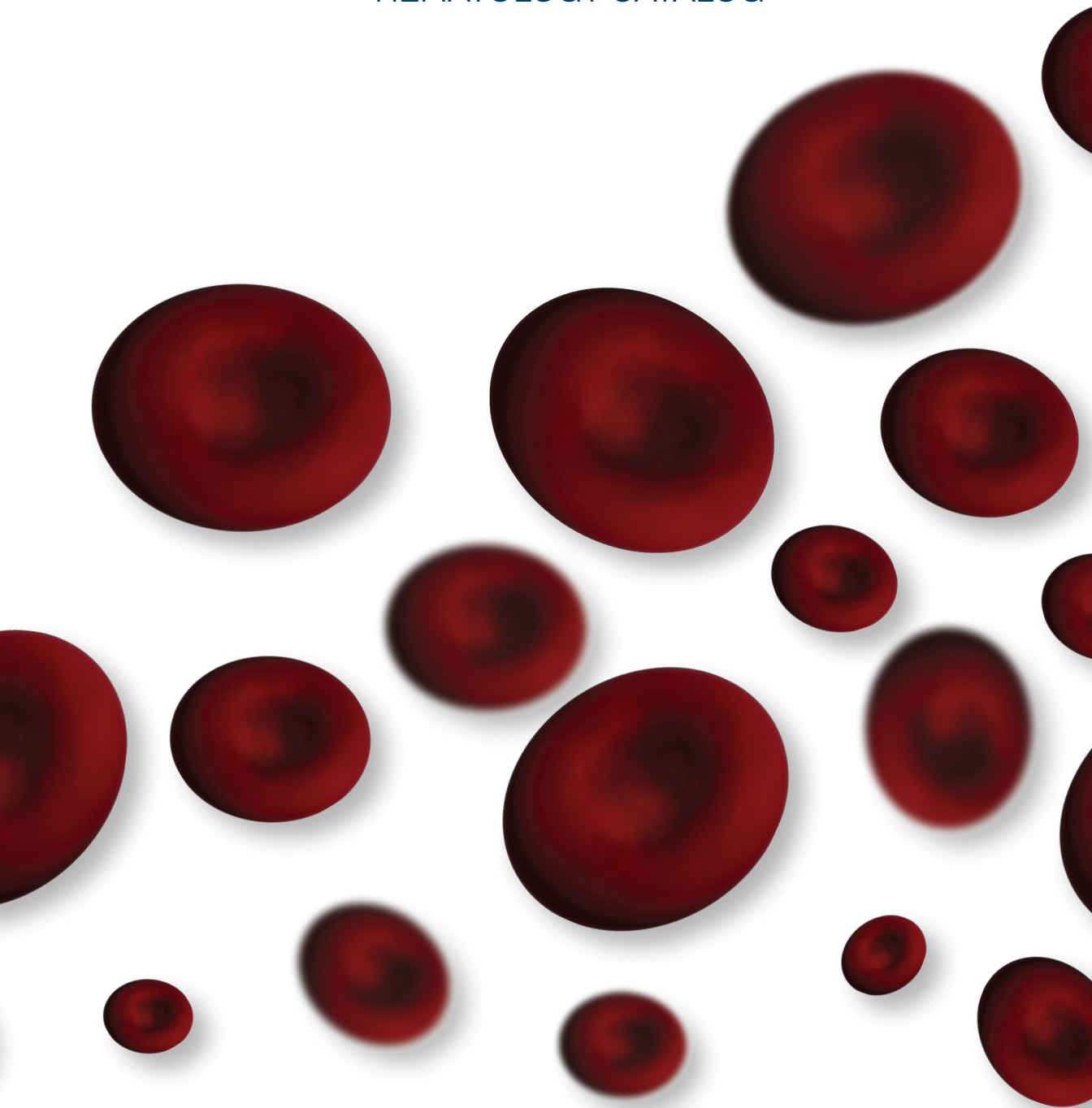




# Ethos Biosciences

HEMATOLOGY CATALOG



## LOCATIONS

### North America

#### **Ethos Biosciences, Inc.**

2070 Center Square Road  
Logan Township, NJ 08085  
800.441.0366  
info@ethosbiosciences.com

#### **Bangs Laboratories, Inc.**

Fishers, IN  
info@bangslabs.com

#### **Polysciences, Inc.**

Warrington, PA  
info@polysciences.com

### Brasil

#### **Ott Scientific Brasil**

Bela Vista - São Paulo/SP  
Brasil  
info@ottscientific.com.br

### Europe

#### **Polysciences Europe GmbH**

Hirschberg an der Bergstrasse  
Germany  
info@polysciences.de

### Asia-Pacific

#### **Polysciences Asia-Pacific, Inc.**

Taipei, Taiwan  
info@polysciences.tw

### India

#### **Ott Scientific India Pvt. Ltd.**

Gurugram, Haryana  
India  
info@ottscientific.in

Founded through the acquisition of the Exocell<sup>®</sup> diagnostics arm of Glycadia, Ethos Biosciences was established to continue the design, development and manufacture of high-quality, easy-to-use diagnostic test kits and reagents. In 2021, we expanded our mission and footprint by bringing legacy American Bionostica (LFA CDMO) and Astral Diagnostics (laboratory dyes and stains) businesses under the Ethos Bio umbrella.

Together with Bangs Laboratories and Polysciences, Ethos Biosciences is part of the Ott Scientific family of companies.



**Ott Scientific**  
CATALYZING INNOVATION

# HEMATOLOGY

Ethos Biosciences' brand Astral Diagnostics hematology portfolio features a broad line of stains and reagents for use with both automated and manual staining protocols. Classical Wright's stain offerings are supplemented by single- and three-step staining protocols that result in rapid differentials. Traditional offerings are available in Wright's and Wright-Giemsa formulations. The use of certified dyes along with strict adherence to quality assurance procedures provides the foundation for products that reward the user with excellent morphological examination.

## DYES & STAINS

### Eosinophil Stain

Used to detect nasal eosinophil count. Stain helps to differentiate allergies from super imposed infections. It can also aid in diagnosing asthma in children and adults.

Eosinophil Stain
5555-16 (16 oz)

### Giesma Stain Azure B

Giemsa stain is a classical blood film stain for peripheral blood smears and bone marrow specimens. It is used to visualize chromosomes, stain fungus histoplasma and identify mast cells. A Romanowsky stain.

Giesma Stain Azure B
5545

*This product may have a hazardous shipping charge.*

### Natt-Herricks Solution

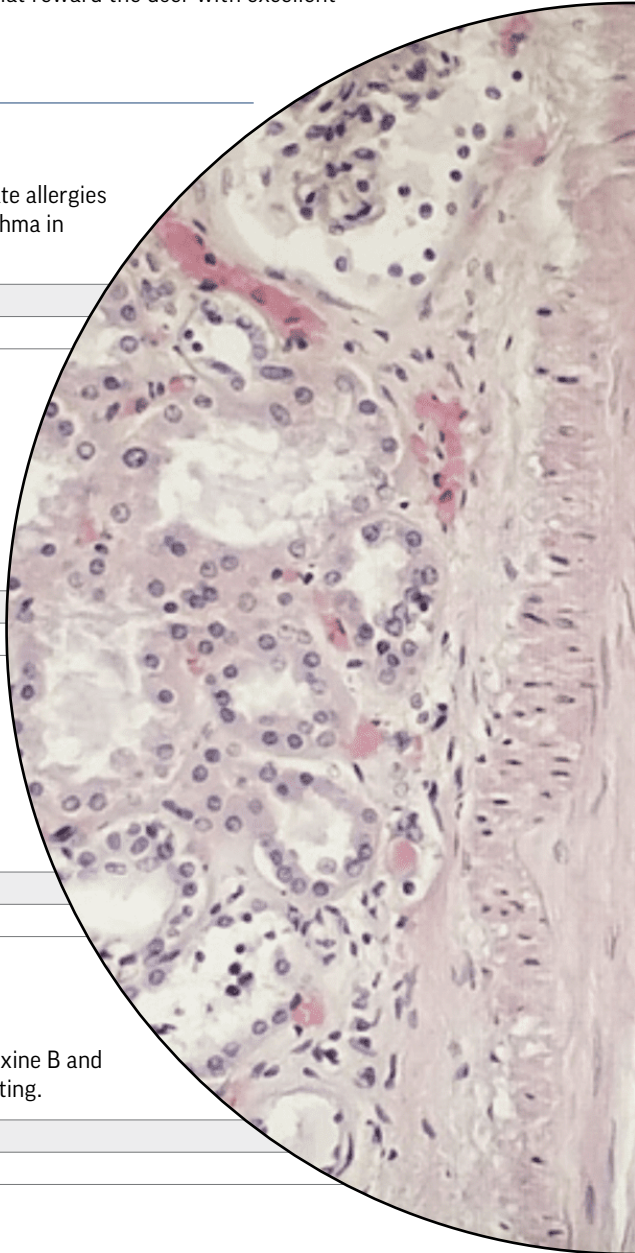
Natt-Herricks Solution is a traditional avian blood counting solution.

Natt-Herricks Solution
5593

### Phloxine 1.0% for Avian White Blood Cell

Phloxine 1.0% for Avian White Blood Cell solution contains phloxine B and polypropylene glycol; used to differentiate avian WBC for counting.

Phloxine 1.0%
5360-32 (32 oz)



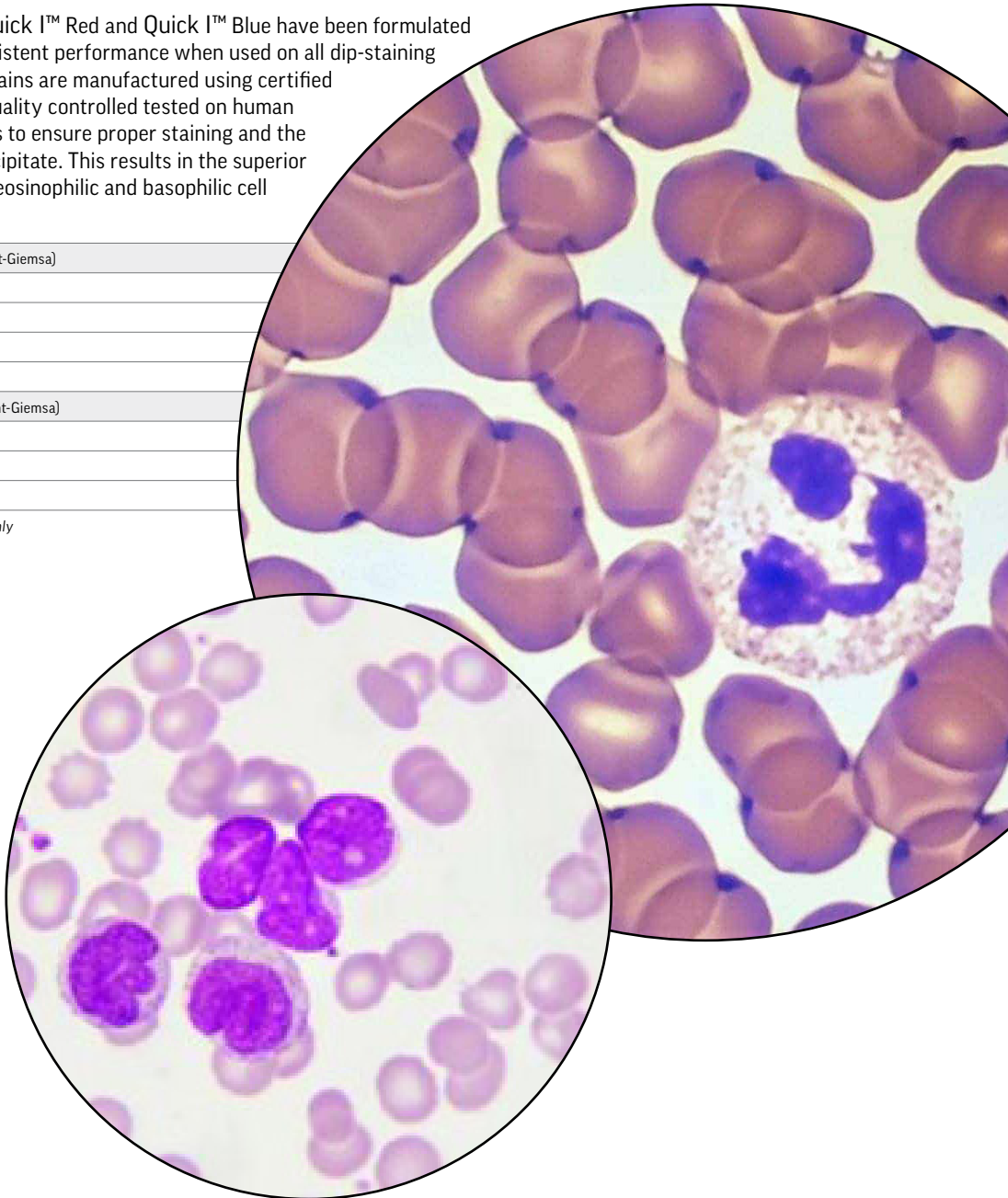
### Quick I™ Red and Quick I™ Blue, (Wright-Giemsa)

Ethos Biosciences/Astral Diagnostics has developed and optimized single staining solutions with broad applicability in the staining of differential blood smears. A buffered adaptation of the traditional Romanowsky formulation, Quick I™ Red yields stained slides that provide results similar to Wright's stain. Quick I™ Blue provides more basophilic results traditionally associated with Wright-Giemsa stains.

Additionally, Quick I™ Red and Quick I™ Blue have been formulated to provide consistent performance when used on all dip-staining instruments. Stains are manufactured using certified dyes and are quality controlled tested on human blood specimens to ensure proper staining and the absence of precipitate. This results in the superior staining of the eosinophilic and basophilic cell components.

Quick I™ Red, (Wright-Giemsa)
5131R-90 (90 ml)
5131R-16 (16 oz)
5131R-32 (32 oz)
5131R-G (1 gal)
Quick I™ Blue, (Wright-Giemsa)
5232B-16 (16 oz)
5232B-32 (32 oz)
5232B-G (1 gal)

*For Professional Use Only*



### Quick III™ Set

QUICK III is a rapid hematology staining system utilizing three prepared solutions. The essential eosin and thiazine staining solutions are manufactured using certified dyes and QC tested on human blood smears. The convenient 15-second slide dip procedure results in stained smears comparable to Wright-Giemsa protocols. Staining times may be altered to vary the eosinophilic or basophilic staining as desired.

Additionally, QUICK III has been formulated to provide superior results when used as an andrology stain. Users will be pleased with the differentiation of immature sperm and white blood cells and the excellent resolution achieved in the staining of the head, neck and tail piece. The variety of packaging configurations will suit the needs of even the largest laboratory performing manual differentials.

Quick III™ Set
5316 (3 x 16oz kit)

### Quick III™ Fixative

Quick III™ Fixative is part of our rapid hematology staining system utilizing three prepared solutions. The essential eosin and thiazine staining solutions are manufactured using certified dyes and QC tested on human blood smears. The convenient 15 second slide dip procedure results in stained smears comparable to Wright-Giemsa protocols. Staining times may be altered to vary the eosinophilic or basophilic staining as desired.

Additionally, QUICK III has been formulated to provide superior results when used as an Andrology stain. Users will be pleased with the differentiation of immature sperm and white blood cells and the excellent resolution achieved in the staining of the head, neck and tail piece. The variety of packaging configurations will suit the needs of even the largest laboratory performing manual differentials.

Quick III™ Fixative
5317-16 (16 oz)
5328-G (1 gal)

*For Professional Use Only.*

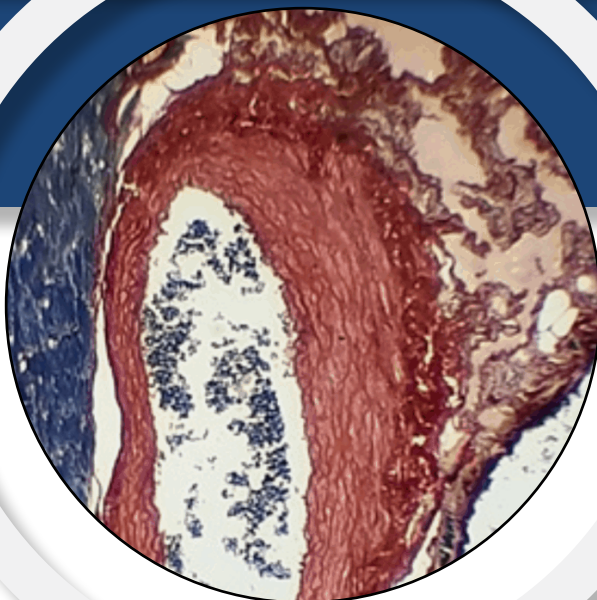
### Quick III™ Solution I and Quick III™ Solution II

Quick III™ Solution I and Quick III™ Solution II is part of our rapid hematology staining system utilizing three prepared solutions. The essential eosin and thiazine staining solutions are manufactured using certified dyes and QC tested on human blood smears. The convenient 15 second slide dip procedure results in stained smears comparable to Wright-Giemsa protocols. Staining times may be altered to vary the eosinophilic or basophilic staining as desired.

Additionally, QUICK III™ has been formulated to provide superior results when used as an Andrology stain. Users will be pleased with the differentiation of immature sperm and white blood cells and the excellent resolution achieved in the staining of the head, neck and tail piece. The variety of packaging configurations will suit the needs of even the largest laboratory performing manual differentials.

Quick III™ Solution I
5318-16 (16 oz)
5329-G (1 gal)
Quick III™ Solution II
5330-16 (16 oz)
5330-G (1 gal)

*For Professional Use Only.*



### Quick III™ Stat-Pak

Quick III™ Stat-Pak is a rapid hematology staining system utilizing three prepared solutions. The essential eosin and thiazine staining solutions are manufactured using certified dyes and QC tested on human blood smears. The convenient 15 second slide dip procedure results in stained smears comparable to Wright-Giemsa protocols. Staining times may be altered to vary the eosinophilic or basophilic staining as desired.

Additionally, Quick III™ has been formulated to provide superior results when used as an Andrology stain. Users will be pleased with the differentiation of immature sperm and white blood cells and the excellent resolution achieved in the staining of the head, neck and tail piece. The variety of packaging configurations will suit the needs of even the largest laboratory performing manual differentials.

Quick III™ Stat-Pak
5303 (3 x 90ml kit)

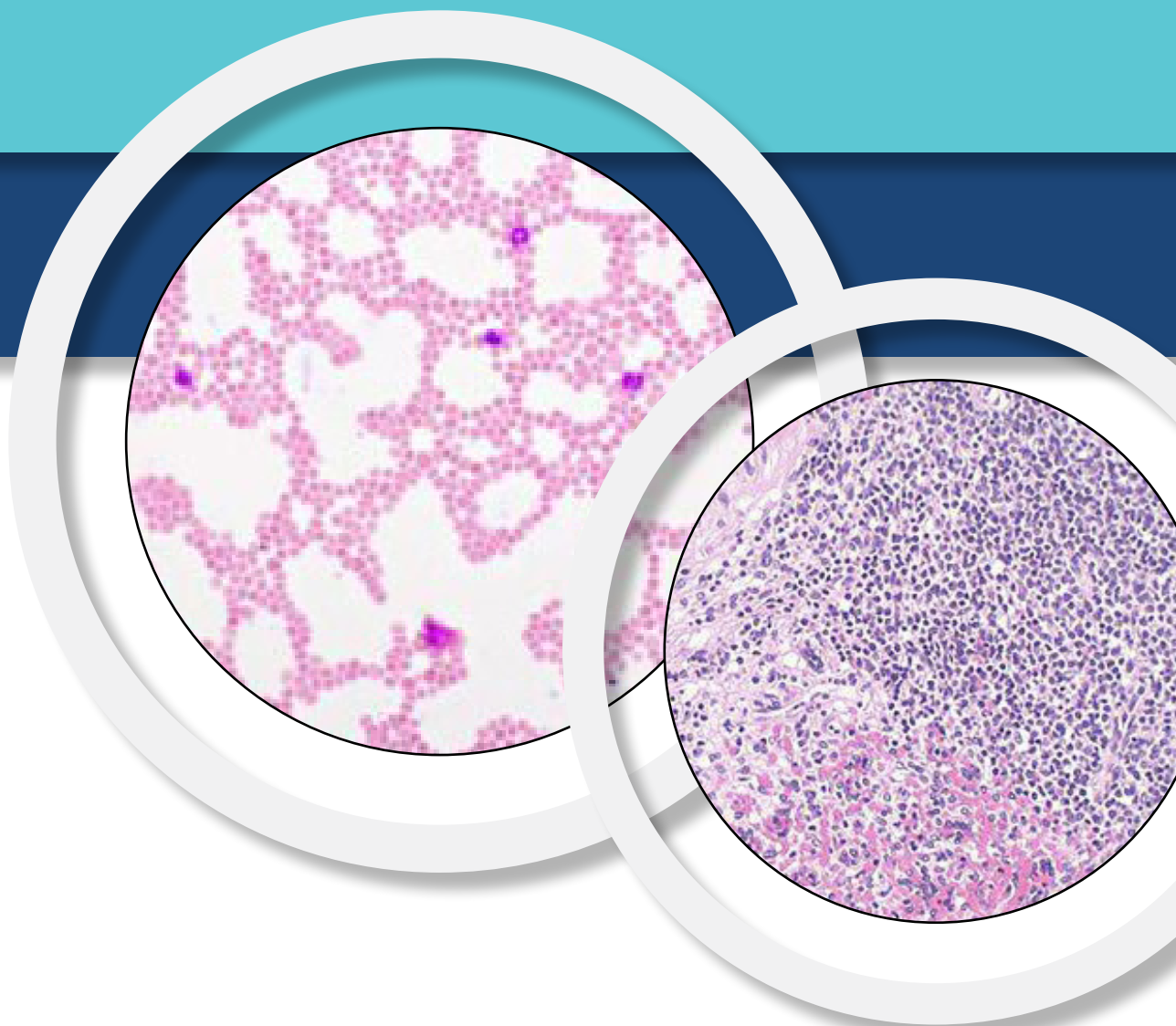
*For Professional Use Only.*

### Wright's Stain

Wright's Stain is a part of the Astral series of stains and reagents for use on popular dip-stainers. Ongoing quality control procedures assure the user of consistent, precipitate free performance. The availability of both pH 6.8 and 7.2 buffers permits the variation of stain intensity.

Wright's Stain
5580-16 (16 oz)
5580-G (1 gal)

*This product may have a hazardous shipping charge.*



### Wright-Giemsa Stain

Wright's Stain is a part of the Astral series of stains and reagents for use on popular dip-stainers. Ongoing quality control procedures assure the user of consistent, precipitate free performance. The availability of both pH 6.8 and 7.2 buffers permits the variation of stain intensity.

Wright-Giemsa Stain
5584-16 (16 oz)
5584-G (1 gal)

*This product may have a hazardous shipping charge.*

### Hematology Stain Pack, Wright's

Offered in Wright's or Wright-Giemsa formulations, users will find the traditional packs equal or exceed other brands on the Hema-Tek Slide Stainer. Regardless of the selected offering, each pack contains stain (220 mL), buffer (540 mL) and rinse solutions (1000 mL) that are quality controlled in our analytical laboratory. Performance testing on human specimens guarantees lot-to-lot consistency.

Hematology Stain Pack, Wright's
1000 (5 packs)

*This product may have a hazardous shipping charge.*



## Hematology Stain Pack, Wright-Giemsa

Offered in Wright's or Wright-Giemsa formulations, users will find the traditional packs equal or exceed other brands on the Hema-Tek Slide Stainer. Regardless of the selected offering, each pack contains stain (220 mL), buffer (540 mL) and rinse solutions (1000 mL) that are quality controlled in our analytical laboratory. Performance testing on human specimens guarantees lot-to-lot consistency.

Hematology Stain Pack, Wright-Giemsa
--------------------------------------

1001 (5 packs)
----------------

## BUFFERS

---

### Hematology Buffer, pH 6.8

Hematology buffer is used to dilute staining solutions in the Wright's, Wright-Giemsa and Giemsa staining processes. Enhances bright-orange stained erythrocytes and differentiates white blood cells.

Hematolgy Buffer, pH 6.8
--------------------------

5548-G (1 gal)
----------------

5548-5G (5 gal)
-----------------

### Hematology Buffer, pH 7.0

Hematology buffer is used to dilute staining solutions in the Wright's, Wright-Giemsa and Giemsa staining processes. Enhances bright-orange stained erythrocytes and differentiates white blood cells.

Hematolgy Buffer, pH 7.0
--------------------------

5575 (1 gal)
--------------

### Hematology Buffer, pH 7.2

Hematology buffer is used to dilute staining solutions in the Wright's, Wright-Giemsa and Giemsa staining processes. Enhances bright-orange stained erythrocytes and differentiates white blood cells.

Hematolgy Buffer, pH 7.2
--------------------------

5573-G (1 gal)
----------------

5573-5G (5 gal)
-----------------

### Hematology Rinse, pH 7.0

The Hematology rinse is used for the rinsing steps required in the Wright's, Wright-Giemsa and Giemsa staining process.

Hematolgy Rinse, pH 7.0
-------------------------

5571-G (1 gal)
----------------



## MICROSCOPY SUPPLIES

---

### Immersion Oil, Low Viscosity

Oil immersion medium available in low viscosity is used when an increased magnification of 100x is necessary.

Immersion Oil, Low Viscosity
5510-15 (0.5 oz)
5510-02 (2 oz)
5510-16 (16 oz)

### Immersion Oil, High Viscosity

Oil immersion medium available in high viscosity is used when an increased magnification of 100x is necessary.

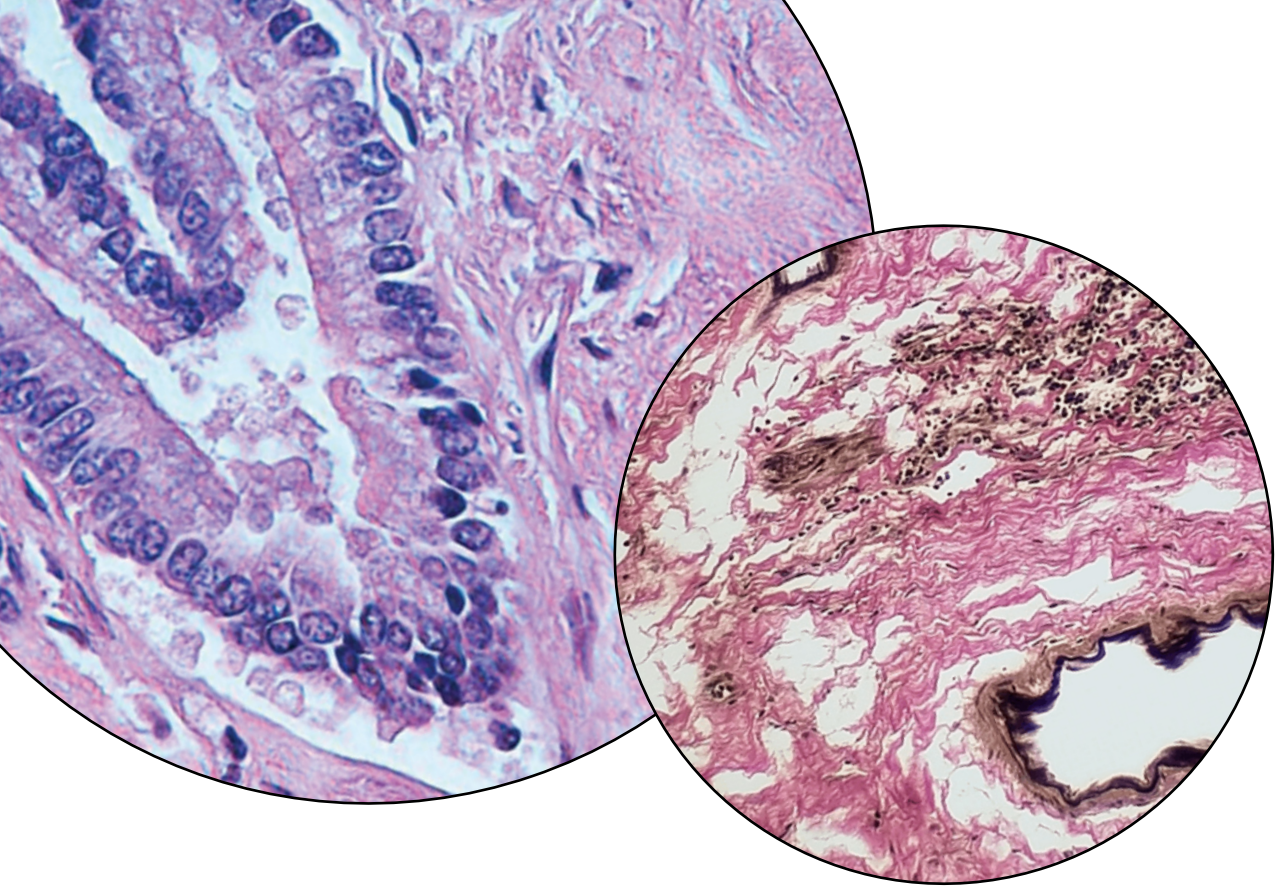
Immersion Oil, High Viscosity
5511-15 (0.5 oz)
5511-02 (2 oz)
5511-16 (16 oz)

### Neat Stain, Slide Holder (5 slide capacity)

Our slide holder is designed specifically for “stat” procedures for laboratories using manual staining procedures, NeatStain is available as a rapid three-step differential Hematology stain, a Gram stain, and a Trichrome stain. Includes a convenient holder that permits the processing of two to five slides at one time for improved efficiency.

Neat Stain, Slide Holder
9-NSH-5

*For Professional Use Only.*



## GENERAL REAGENTS

### Copper Sulfate (SG 1.053)

Copper sulfate is a general reagent for multiple research needs.

Copper Sulfate (SG 1.055)
5599-16 (16 oz)
5599-G (1 gal)

### Deionized Water

Deionized water is the recommended water for most research needs and clinical procedures.

Deionized Water
3315-G (1 gal)
3315-5G (5 gal)

### Methanol

Methanol is a fixative used for cytology and hematology specimen.

Methanol
3326-16 (16 oz)
3326-G (1 gal)

*This product may have a hazardous shipping charge.*

## About Us

Ethos Biosciences manufactures the Astral Diagnostics brand of diagnostic stains and laboratory reagents. For more than 20 years, our products have been used in academic, clinical and veterinary medical laboratories. We work with retail, bulk, private label and OEM customers, and our Custom & Contract services span formulation, packaging/kitting and fulfillment.

### Our Commitment to Service

We are uniquely positioned to offer highest-level technical support and troubleshooting assistance. As a manufacturer, we have a deep understanding of dye and stain formulations; this also enables us to achieve highest quality standards for our products. Ethos' Astral Diagnostics products are supported by fully-equipped, on-site laboratories that are staffed with experienced technicians. We understand the laboratory ecosystem, and are able to provide truly authentic support to our customers. We're happy to assist with product selection or protocol review, and will take our troubleshooting to the bench if a deeper investigation is required.

### Our Commitment to Quality

At Ethos Biosciences, quality extends far beyond basic dye formulation and concentration checks. Our fully-integrated program ensures control from start to finish—it begins with raw materials, and encompasses dye and reagent formulation, manufacturing and quality control. Product QC is comprehensive, with performance testing that features actual specimens to ensure that dyes meet expected intensity and cellular component differentiation criteria. For Ethos, Quality isn't simply a claim—it's the cornerstone of our philosophy and our commitment to you.

### Our Commitment to You

At the end of the day, we do all of these things for one purpose: to serve our valued customers. We invite you to contact us with any questions, or to browse the Resources section of the website for protocols and other support documents. Our application experts are also available to assist with technical questions [info@ethosbiosciences.com](mailto:info@ethosbiosciences.com) or 800-441-0366.

We look forward to working with you—we're happy to help!



Stay Connected, Follow Us!





# Ethos Biosciences

2070 Center Square Road  
Logan Township, NJ 08085

Stay Connected - Follow Us!

