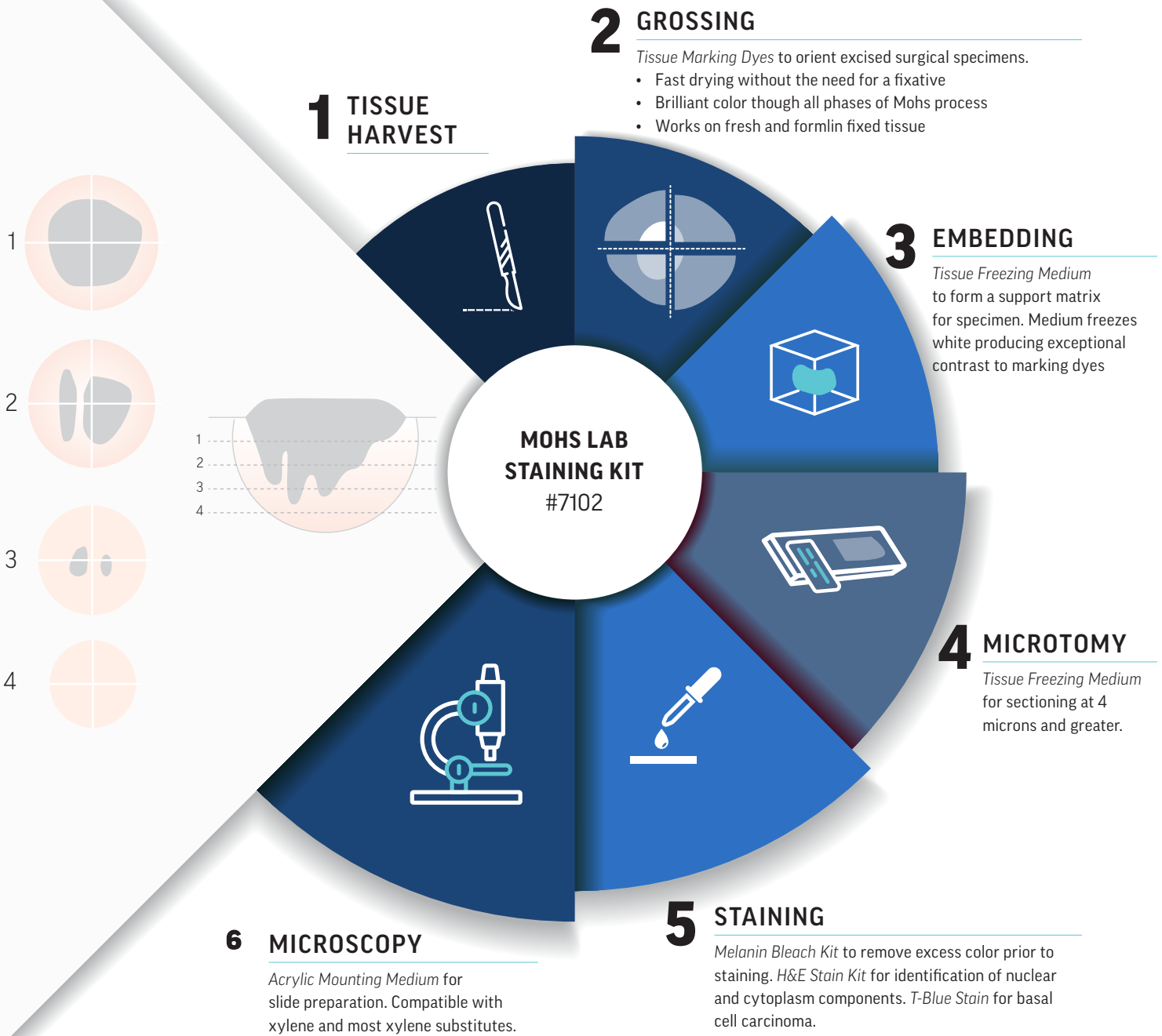


MOHS KIT Process & Reagents

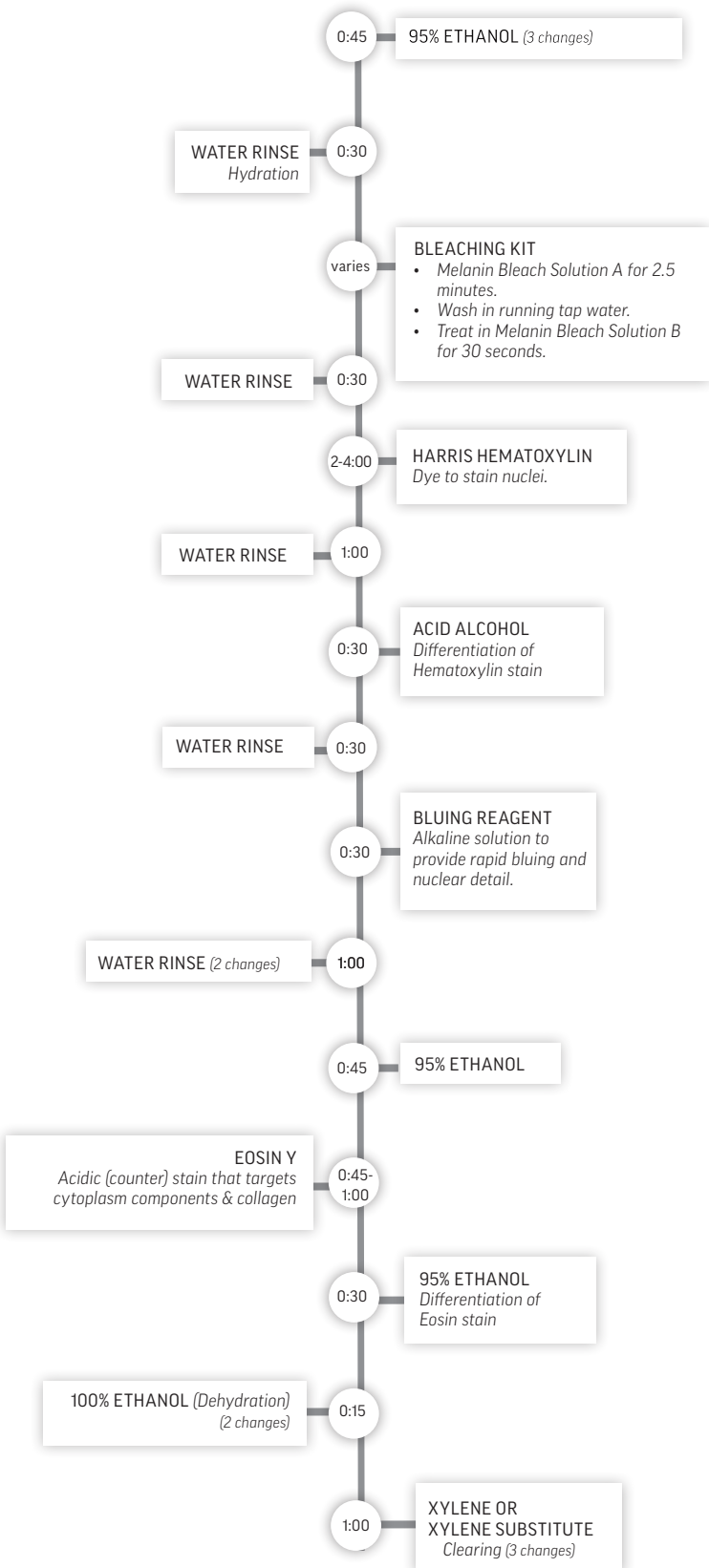
Tissue staining is the cornerstone of Mohs Micrographic Surgery (MMS). Try our Mohs Lab Staining Kit, which includes high performance Astral Diagnostics' stains and reagents that will consistently produce slides with excellent morphology and differentiation of target cellular components. The kit includes marking dyes; freezing medium; bleaching reagents; both Hematoxylin and Eosin (H&E) and Toluidine Blue (T-blue) stains; and mounting medium.

Astral is a leader in dye and stain technology and has histotechnologists on-staff that can help with setting up your Mohs Lab and troubleshooting staining issues. Visit www.EthosBiosciences.com today to learn more.



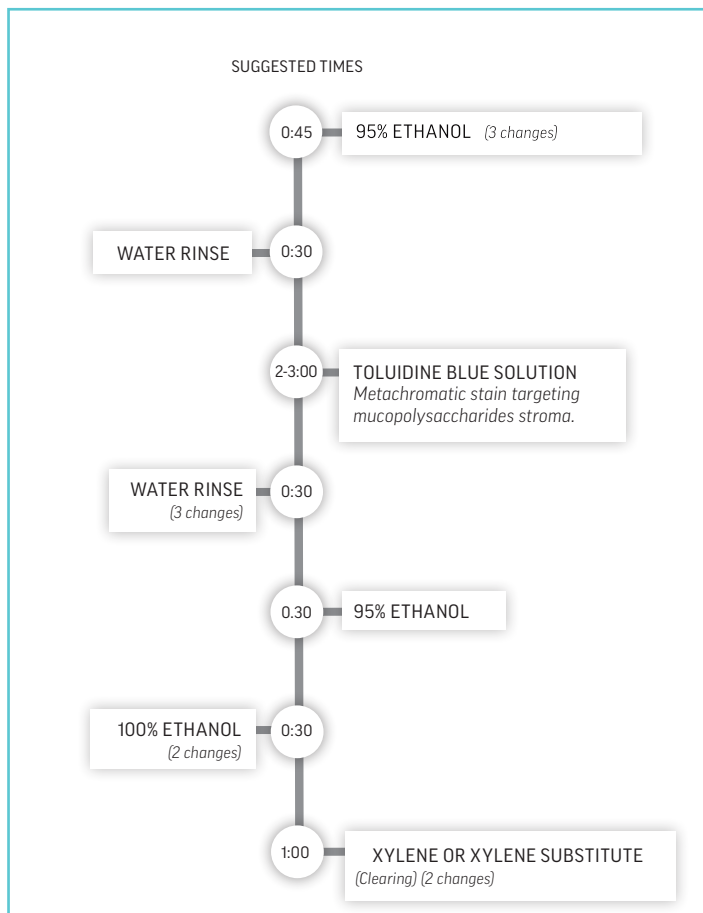
H&E STAINING SAMPLE PROTOCOL

SUGGESTED TIMES



BASAL CELL STAINING W/ TOLUIDINE BLUE SAMPLE PROTOCOL

SUGGESTED TIMES



ORDERING INFORMATION

| Cat. # | Description |
|--------|--|
| 7102 | Mohs Lab Staining Kit: Tissue Marking Dye Set: (ultra black (7562), royal blue (7563), ruby red (7564), emerald green (7565), and golden yellow (7566), SubZero-Matrix Tissue Freezing Medium (7568), Melanin Bleach Kit (7567), Harris Hematoxylin (7002-16), Eosin (7006-16), 1% Toluidine Blue (6054), Acid Alcohol (7560-16), Bluing Reagent (3356-16), Acrylic Mounting Medium (3349-4) |
| 3315 | Deionized water |
| 3340 | Ethanol Solution, 95% |
| 3341 | Ethanol Solution, 100% |
| 3346 | Xylene |
| 3344 | Clear-Sub (Xylene Substitute) |

Go to [EthosBiosciences.com](https://ethosbiosciences.com) to see our full product listings.

Please contact us regarding private label, contract manufacturing or product customization.